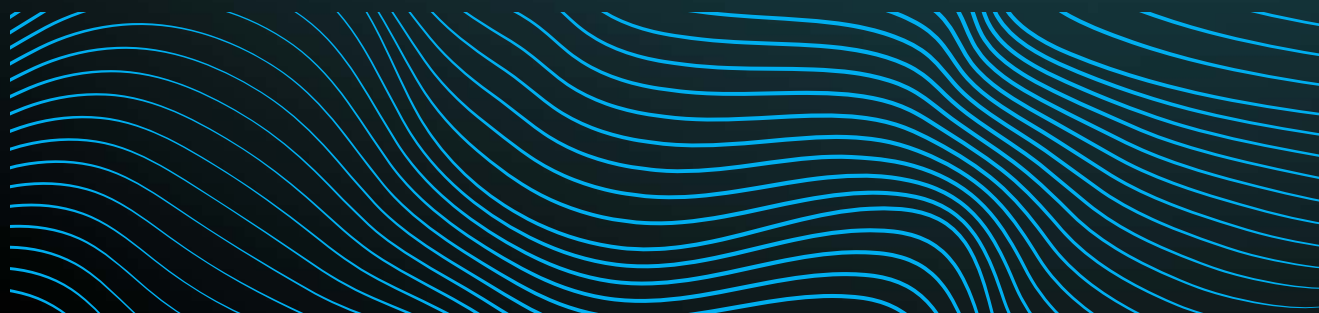
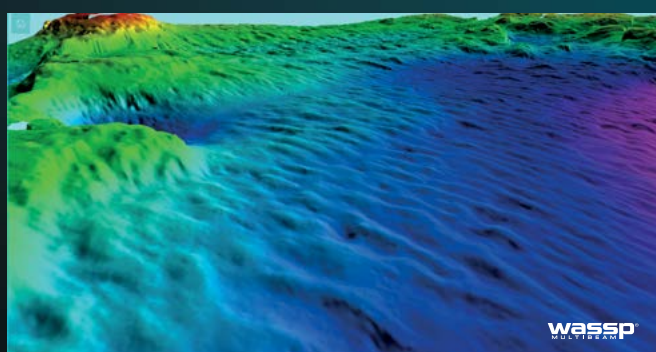


F SERIES

MULTIBEAM FOR FISHERIES

# SEE IT ALL



**F SERIES**

**wassp**<sup>®</sup>  
MULTIBEAM

SEE IT ALL



# DISCOVER A NEW WORLD WITH THE LATEST INNOVATION FROM WASSP

---

Outstanding performance, versatility and value. That's what you expect and exactly what you get with the new **F3** sonar from WASSP.

This next generation multibeam sonar has been redesigned from the ground up around a new fully digital DRX transceiver. It delivers on every front – accurate, versatile, user-friendly and most importantly, scalable to your exact needs.

The only thing that hasn't changed with the **F3** is our commitment to bring you a multibeam sonar at a cost-effective price.

**wassp**<sup>®</sup>  
MULTIBEAM

SEE IT ALL



# F3

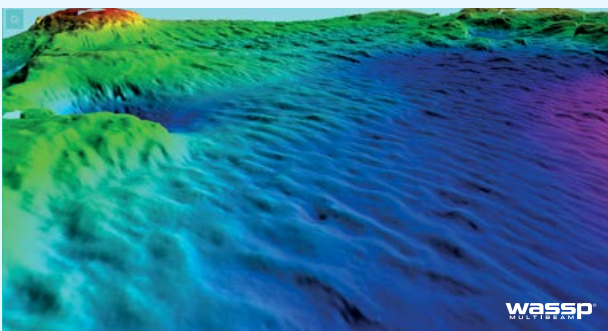
## MULTIBEAM SONAR

- ▶ **New all-in-one digital DRX transceiver**  
Incredibly versatile and ready for the next technology advances
- ▶ **Wideband fully digital** 136 - 184kHz transducer technology
- ▶ **Choose your own functions** with new licensing options
- ▶ **Cost-effective solution** for multiple applications
- ▶ **Wireless capability** with optional licence
- ▶ **Easy to install/commission**
- ▶ **Turnkey solution offered** with position/heading and motion sensors
- ▶ **CDX** – Simplified user interface
- ▶ **TimeZero compatible** with optional licence



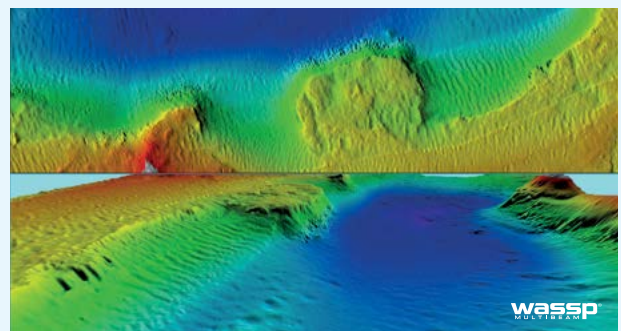
Multibeam Transducer

## GENERATE YOUR OWN PERSONAL MULTIBEAM CHART



The **F3** is set to revolutionise inshore fisheries with its Wideband CHIRP technology.

Scanning a 120 degrees swath port to starboard and using 224 beams, the **F3** delivers each and every time. By using advanced signal processing, you get a complete picture of seafloor bathymetry with ease.



# DRX MULTIBEAM HARDWARE FOR THE FUTURE

This innovative all-in-one “black-box” is not just a robust hardware platform but also introduces **cutting-edge technical innovations and incredible versatility for finding your catch**. This opens countless new possibilities for your operations.

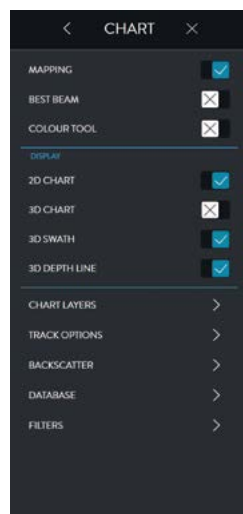


- ▶ Dimensions (L x W x H): 377 x 260 x 132mm
- ▶ Power supply: 9-32VDC

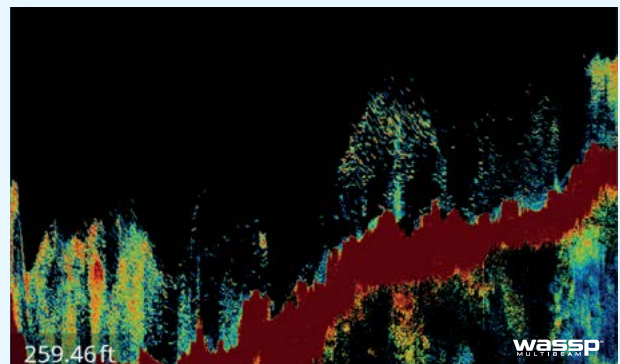
DRX

## NEW EASY-TO-USE INTERFACE

The **F3** introduces a new simplified WASSP CDX for control, visualisation and data management while still providing a comprehensive set of functions to meet the most demanding fishing requirements.



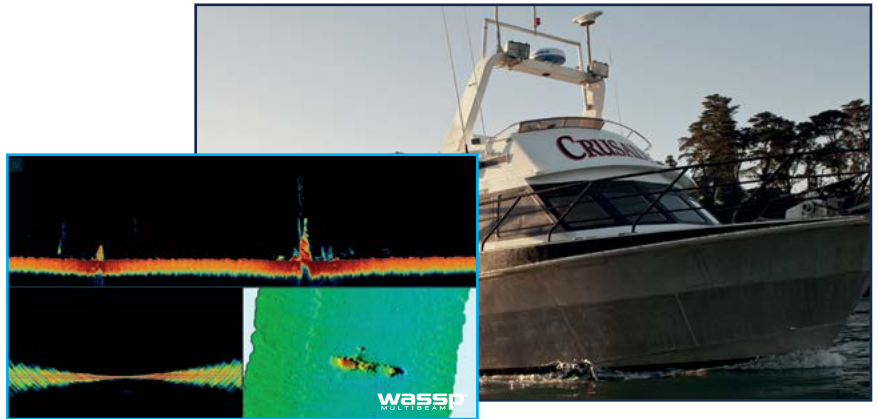
## UNPRECEDENTED CLARITY



## INSHORE FISHING

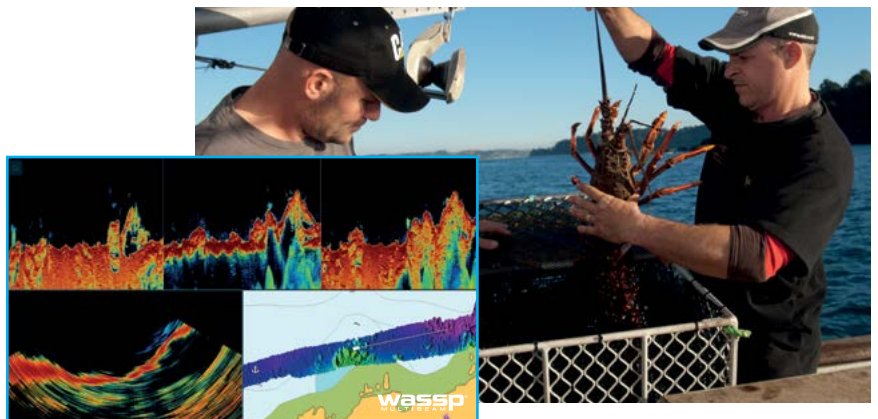
The scalable system has a wide range of features and capabilities; all manner of inshore fishing types can be optimised, ensuring efficiency and increased productivity in all fishing methods employed.

The system can be tailored for all types of inshore fisheries.



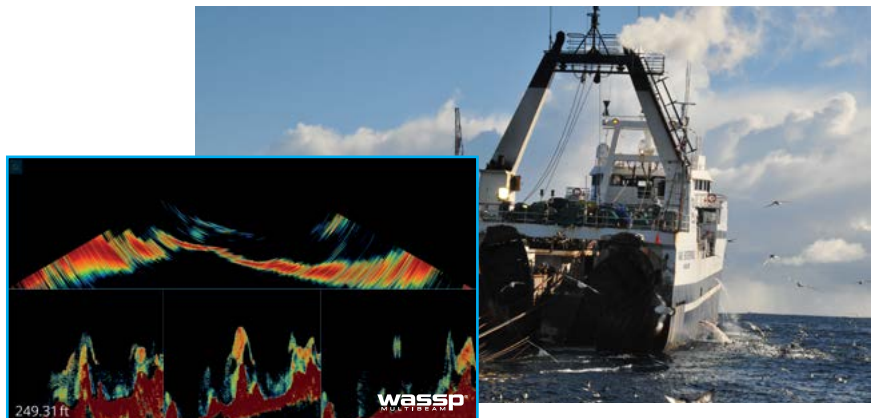
## POTTING

The 3D presentation of the seabed, coupled with the optional backscatter function, to aid in the assessment of seafloor hardness, ensures the best location of pots in a range of environments.



## TRAWLER

With accurate water column and seabed information at hand, skippers are better informed, and can make decisions ensuring they maximise their catch while minimising time at sea.



## SPORTSFISHING

With its 120° swath, baitfish shoals can be located quickly, allowing the presentation of lures and baits to marauding billfish and tuna. The wide band CHIRP technology employed provides amazing target separation of target species throughout the full water column.





F3

## SPECIFICATIONS

## EQUIPMENT DETAILS

MODEL	F3	F3L
FREQUENCY	160kHz (WideBand Variable)	80kHz (WideBand Variable)
TRANSCIVER TYPE	DRX	DRX
TRANSDUCERS SUPPORTED	WMB-160	WMB-80
IMU SUPPORTED	External	External
DEPTH - SWATH *	200m	450m
DEPTH - MAX *	400m	900m
EFFECTIVE BEAMWIDTH (ATHWARTSHIPS X FORE-AFT)	120° x 4°	120° x 4°
BEAM WIDTH PS (DEG)	4.4	4.4
BEAM WIDTH FA (DEG)	3.2	3.2
BEAM SPACING (NOMINAL)	0.54° over 120° (224 Beams)	0.54° over 120° (224 Beams)
MAX VERTICAL RESOLUTION (CM)	2	2
SENSORS CONNECTIVITY	DRX	DRX
PSU	9-32VDC (30W)	9-32VDC (30W)
BOTTOM DETECTIONS	Amplitude & Phase	Amplitude & Phase
INTERFACE	RS232/422/NMEA0183	RS232/422/NMEA0183
TIDE CORRECTION	Fully Geo Referenced	Fully Geo Referenced
BATHYMETRY 2D / 3D	Yes	Yes
SONAR POLAR VIEW	Yes	Yes
SOUNDER (QUINT BEAM)	Yes	Yes

## OPTIONAL MODULES

BACKSCATTER	Option	Option
SIDESCAN	Option	Option
RAW DATA	No	No
WATER COLUMN TARGETS	Option	Option
OPEN CLIENT SUPPORT**	Option	Option
RTK TIDES	Option	Option
XYZ DATA FORMAT EXPORT	Option	Option
GSF DATA FORMAT EXPORT	Option	Option

## USER INTERFACE

CDX-VISUALISATION & CONTROL UI	Inc
NMEA 2000	Inc
TIME ZERO PRO**	Option

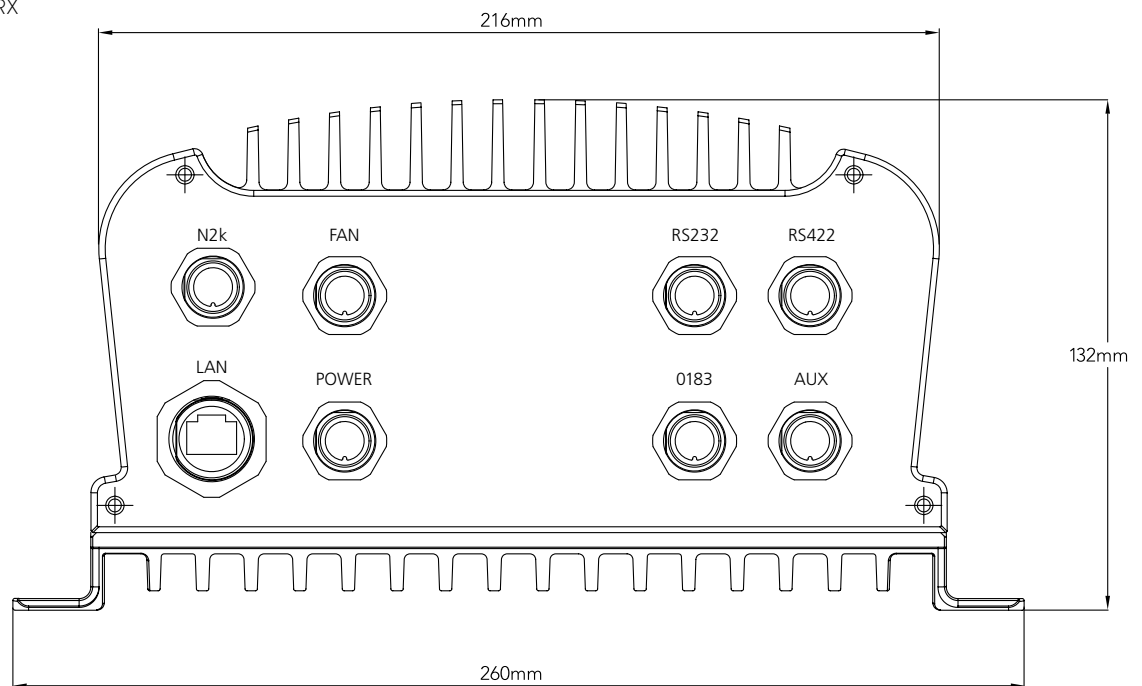
## MINIMUM PC SPECS FOR CDX SOFTWARE

	MINIMUM	RECOMMENDED
<b>OS</b>	Windows 7,8.1,10	Windows 8.1,10
<b>CPU</b>	2Ghz, 2 Cores/4 Threads	2Ghz, 4 Cores/4 Threads
<b>MEMORY</b>	4GB	8GB
<b>GRAPHICS</b>	DirectX11	DirectX11
<b>SCREEN RESOLUTION</b>	1024 x 768	FHD-1920 x 1080
<b>SSD</b>	250GB	2TB
<b>NETWORK</b>	Ethernet-GbE, WiFi-802.11ac	Ethernet-GbE, WiFi-802.11ac
<b>DUAL SCREEN SUPPORT</b>	Yes	Yes

## EQUIPMENT DIMENSIONS

	DIMENSIONS (LxWxH, MM)	WEIGHT
<b>DRX</b>	377 x 260 x132	8.3kg
<b>TRANSDUCER 80 (FOR F3L)</b>	527 x 336 x 130	39kg (with 20m cable)
<b>TRANSDUCER 160 (FOR F3)</b>	326 x 163 x 94	15kg (cable dependent)

Image shows DRX Hardware. For more information and dimensional drawings please refer to the DRX installation manual.



WASSP requires (3rd party) position, heading, roll, pitch and heave data for electronic beam compensation/stabilization (not included in base package). See your local WASSP expert for more information/clarification. Specifications subject to possible change without notice.

\*Depth capability subject to a variety of external factors.

\*\*Open Client Support module is required for interfacing DRX to any 3rd party client application.

\*\*\*Requires WASSP Open Client Support Module

For more info or to find a dealer near you: W: [WASSP.COM](http://WASSP.COM) P: (+64) 9 373 5595 E: [sales@wassp.com](mailto:sales@wassp.com) FB: [facebook.com/wasspmultibeam](https://facebook.com/wasspmultibeam)

**wassp**<sup>®</sup>  
MULTIBEAM  
SEE IT ALL

# WASSP: ALWAYS GOING BEYOND

WASSP is part of the ENL Group, world leaders in marine sounder, radar and communications for more than 72 years. Based in the marine nation of New Zealand, which is in one of the world's largest marine economic zones, ENL continues to achieve and push boundaries in what is a challenging and dynamic industry.

We make software and hardware solutions for organisations working in surveying and mapping, defence, commercial fishing and workboats.

Our passion and commitment to real innovation is what sets us apart. We consistently bring to market game-changing technology and cost effective products with simple operation.

---

## Worldwide support

WASSP is sold and supported by a global network of authorised distributors.

We offer comprehensive technical and user training and can direct technical support worldwide if required.

We pride ourselves on world class product support.

---

## For more info or to find a dealer near you:

Visit **WASSP.COM**

☎ **(+64) 9 373 5595**

✉ **sales@wassp.com**

📘 **facebook.com/wasspmultibeam**